

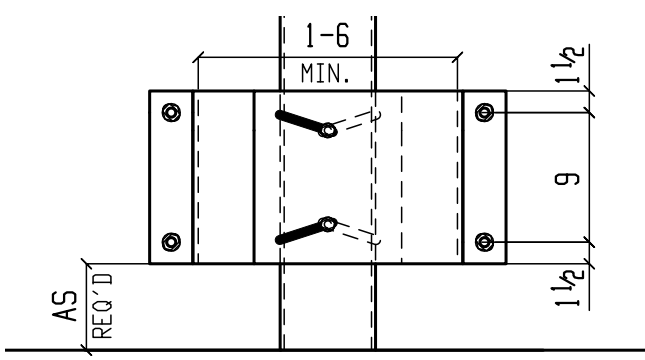
(4) 5/8x5 1/2 HILTI KWIK BOLT T22  
4" MIN. EMBEDMENT  
PART #PGEB3

PIPE GUARD ASSEMBLY PG6  
(2) PART #PGP6  
(4) PART #PGEB3  
(2) PART #PGBM1

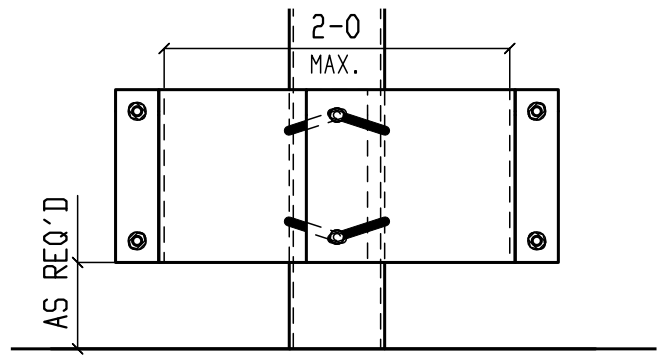
(2) BENT PL 3/8x12  
PART #PGP6

(2) 1/2x1 3/4 A325  
W/ N & DBL FW  
PART #PGBM1

**PIPE GUARD PG6 @ WALL**  
SECTION VIEW



**PIPE GUARD PG6 @ 18" INSIDE WIDTH**  
ELEVATION VIEW

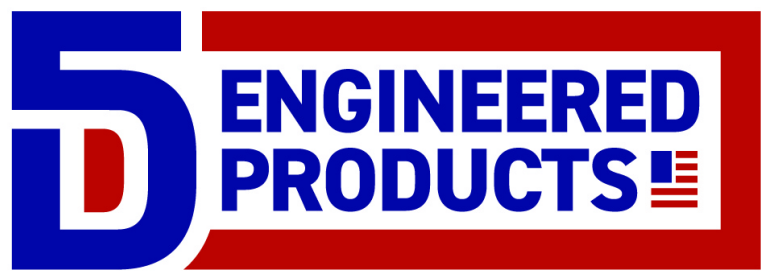


**PIPE GUARD PG6 @ 24" INSIDE WIDTH**  
ELEVATION VIEW

FOR LOAD OF 6 KIPS BENT PL THICKNESS 0.375	
WIDTH (in.)	MAX DEFLECTION (in.)
18	0.535
19	0.630
20	0.736
21	0.853

FOR LOAD OF 6 KIPS BENT PL THICKNESS 0.375	
WIDTH (in.)	MAX DEFLECTION (in.)
22	0.981
23	1.120
24	1.272

REQUIRED BOLTS	
(4)	GALV. 5/8x5 1/2 HILTI KWIK BOLT T22 - PART #PGEB3
(2)	GALV. 1/2x1 3/4 A325 W/ N & DBL FW - PART #PGBM1



ACTIVE MEMBER

PRODUCT DATA	
BENT PL SIZE	3/8x12x2-4 3/8 ±
FINISH	GALVANIZED OR YELLOW POWDER
STEEL TYPE	GRADE 50
PIPE GUARD ASSEMBLY PG6	