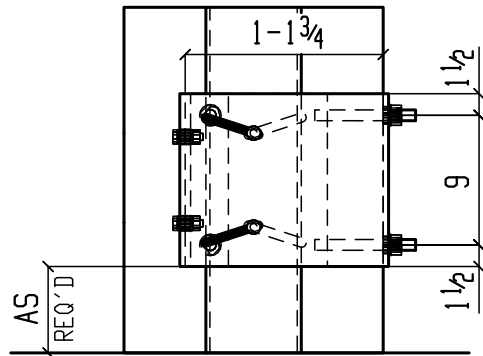


- PIPE GUARD ASSEMBLY PG7
- (1) PART #PGP5
  - (1) PART #PGP7
  - (1) PART #PGA1
  - (4) PART #PGEB2
  - (4) PART #PGBM1

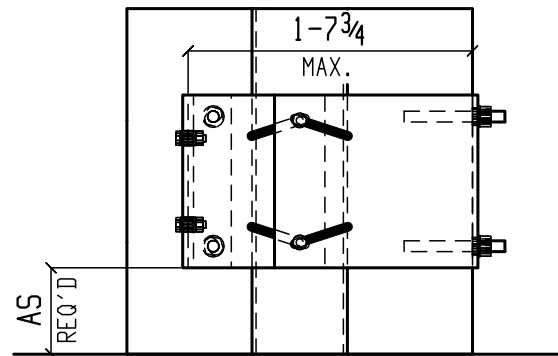
**PIPE GUARD PG7 @ COLUMN**

SECTION VIEW



**PIPE GUARD PG7 @ 18" COLUMN**

ELEVATION VIEW



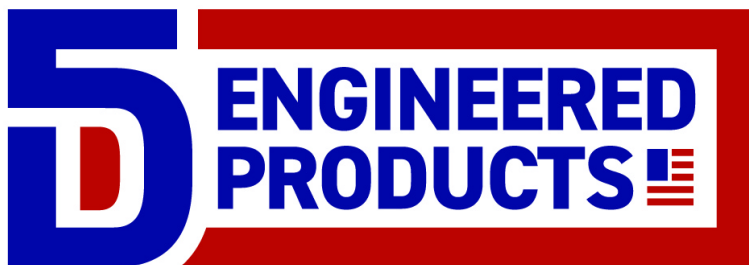
**PIPE GUARD PG7 @ 24" COLUMN**

ELEVATION VIEW

FOR LOAD OF 6 KIPS BENT PL THICKNESS 0.375	
WIDTH (in.)	MAX DEFLECTION (in.)
13	0.804
14	0.798
15	0.794
16	0.791

FOR LOAD OF 6 KIPS BENT PL THICKNESS 0.375	
WIDTH (in.)	MAX DEFLECTION (in.)
17	0.789
18	0.788
19	0.788
20	0.911

REQUIRED BOLTS
(4) GALV. 3/4x7 HILTI KWIK BOLT T22 - PART #PGEB2
(4) GALV. 1/2x1 3/4 A325 W/ N & DBL FW - PART #PGBM1



ACTIVE MEMBER

PRODUCT DATA	
BENT PL SIZE	3/8x12xVARIES
FINISH	GALVANIZED OR YELLOW POWDER
STEEL TYPE	GRADE 50
PIPE GUARD ASSEMBLY PG7	